

# WELCOME



# MANBICARE

---

"To **SUCCEED** in your mission  
you must have single-minded  
devotion to your **GOAL.**"

A System  
Work  
For You...

**MANBICARE**

# COMPANY LEGAL DOCUMENTS



**AXIS BANK**

GAJRAULA (UP), GAJRAULA, 244235  
IFS CODE - UTIB0001470

Account No. : 920020059075461

**MANBICARE**

**COMPANY  
CMD**



**Mr. Manvir Singh**

**Chief Managing Director**

**Manbicare Marketing Pvt. Ltd.**

**MANBICARE**

**COMPANY  
MD**



**Babli**

**Managing Director**

**Manbicare Marketing Pvt. Ltd.**



**MANBICARE**

# BUSSINESS PLAN

**REGISTRATION - FREE**

**ACTIVATION - 2000 BV**



**MANBICARE**

# ID ACTIVATION

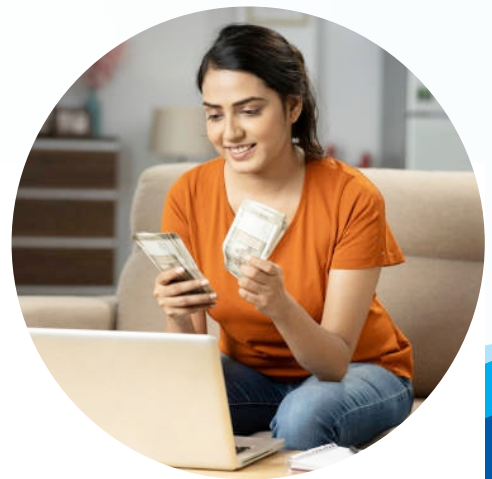
## ID ACTIVATION - 2000 BV

- ➡ **OPEN CHOICE PRODUCTS = 2000 BV**
- ➡ **MANBICARE PACKAGE RS. 3100/- = 2000 BV**  
(2 Thunder Fighter + 2 Intimacy)
- ➡ **LDP PACKAGE RS. 7500/- MRP PRODUCTS = 2000 BV**  
(2 NIGHTS / 3 DAYS IN ANY HILL STATION)  
आने जाने की व्यवस्था स्वयं की होगी।
- ➡ **BOOSTER PACKAGE RS. 7500/- MRP PRODUCTS = 2000 BV**  
(जिसमें आपको 400 रु. प्रति माह 30 महीने तक मिलेंगे)



## TYPE OF INCOME

- Retail Income
- Team Performance Bonus
- Royal Bonus
- Travel Bonus
- Car Bonus
- House Bonus
- Star Bonus
- Nominee Fund
- Time To Time Bonanza



**MANBICARE**

# BUSSINESS PLAN

## RETAIL INCOME

UP TO  
**50%**



### EXAMPLE

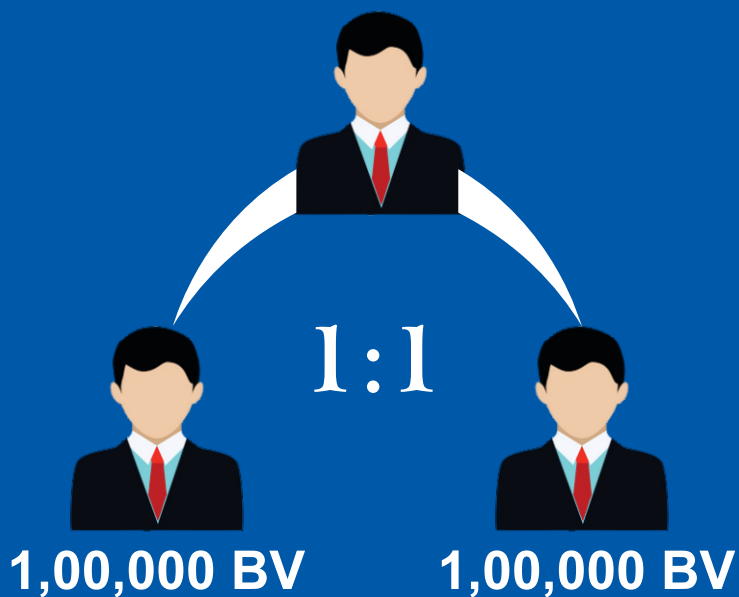
M.R.P.	D.P.	RETAIL INCOME
800/-	400/-	400/-



**MANBICARE**

# BUSSINESS PLAN

## TEAM PERFORMANCE BONUS



**MATCHING**  
**20%**

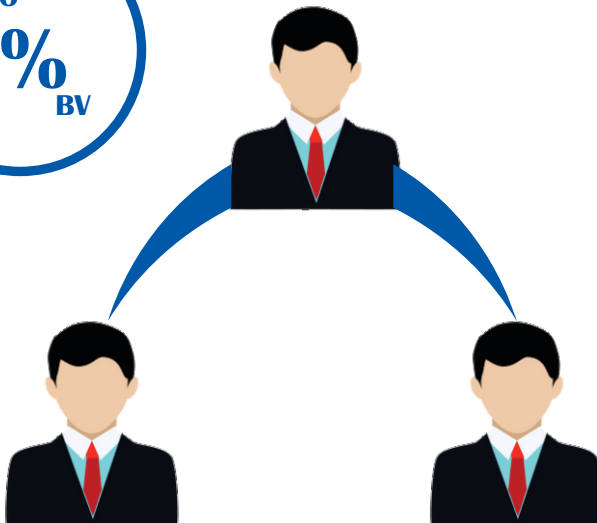
**MATCHING 1 LAC BV**  
**20% OF 1 LAC = 20,000/-**

**POWER LAG CARRY FORWARD**  
**NO CAPPING**

**MANBICARE**

# BUSSINESS PLAN

## ROYAL BONUS



10,000 BV

10,000 BV



**3% of total (BV) of the Company of  
Generated in the Closing**

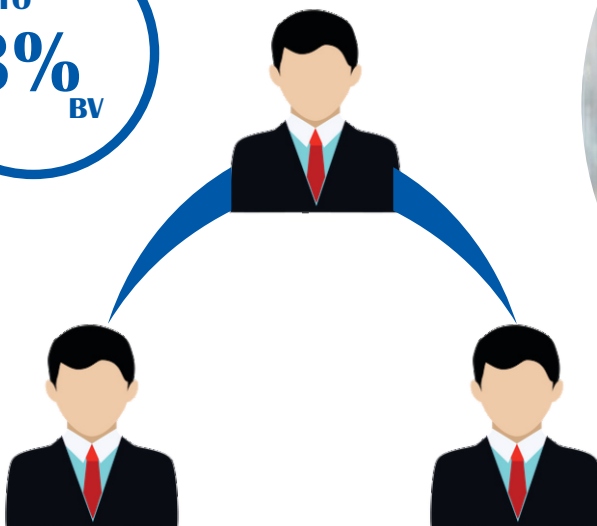
**Total No. of Points Generated by  
Eligible distributor in the Closing  
ACCUMULATED & CARRY FORWARD**

**MANBICARE**

# BUSSINESS PLAN

## TRAVEL BONUS

CTO  
**3%**  
BV



**25,000 BV**

**25,000 BV**



**3% of total (BV) of the Company of  
Generated in the Closing**

**Total No. of Points Generated by  
Eligible distributor in the Closing  
ACCUMULATED & CARRY FORWARD**

**MANBICARE**

# BUSSINESS PLAN

## CAR BONUS

CTO  
**3%**  
BV



50,000 BV



50,000 BV

**3% of total (BV) of the Company of  
Generated in the Closing**

**Total No. of Points Generated by  
Eligible distributor in the Closing  
ACCUMULATED & CARRY FORWARD**



**MANBICARE**

# BUSSINESS PLAN

## HOUSE BONUS



1,00,000 BV



1,00,000 BV

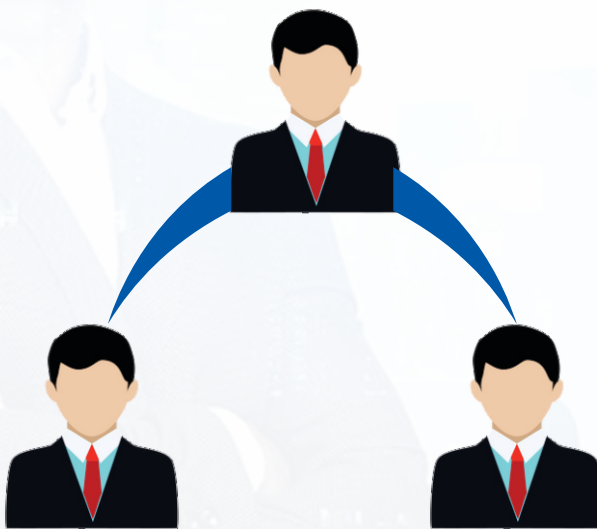
**3% of total (BV) of the Company of  
Generated in the Closing**

**Total No. of Points Generated by  
Eligible distributor in the Closing  
ACCUMULATED & CARRY FORWARD**

**MANBICARE**

# BUSSINESS PLAN

## STAR BONUS



**30,000 BV**

**30,000 BV**

**ACCUMULATED BUSSINESS**

**CASH REWARD**  
**4000/-**



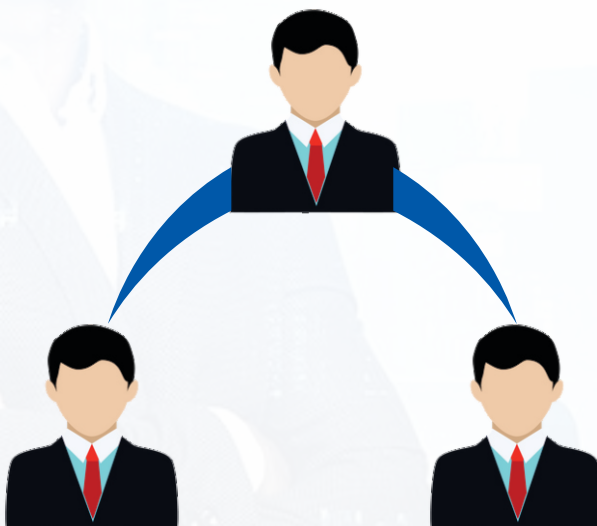
**STAR - 1**



**MANBICARE**

# BUSSINESS PLAN

## STAR BONUS



**1,05,000 BV**

**1,05,000 BV**

**ACCUMULATED BUSSINESS**



**STAR - 2**

**CASH REWARD**

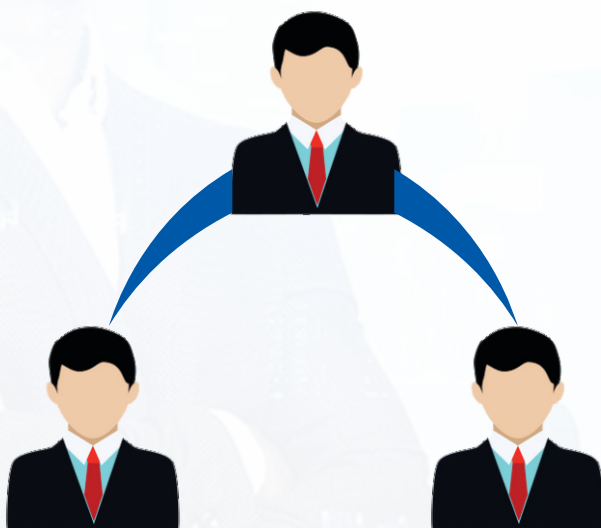
**10,000/-**



**MANBICARE**

# BUSSINESS PLAN

## STAR BONUS



**3,05,000 BV**

**3,05,000 BV**

**ACCUMULATED BUSSINESS**



**STAR - 3**

**CASH REWARD**

**25,000/-**

**Nainital Tour**

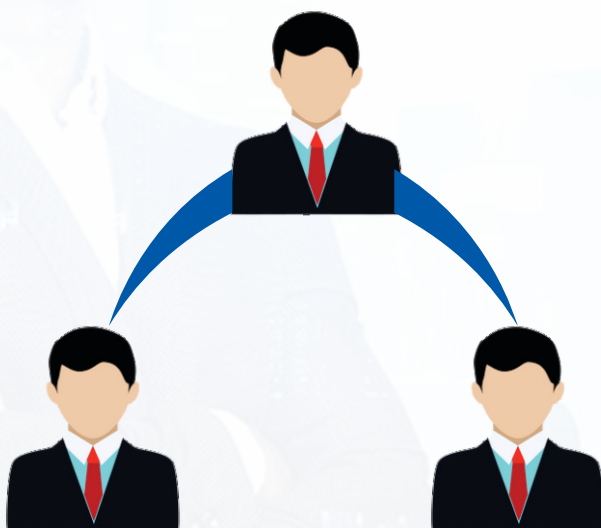




**MANBICARE**

# BUSSINESS PLAN

## STAR BONUS



**7,05,000 BV**

**7,05,000 BV**

**ACCUMULATED BUSSINESS**



**STAR - 4**

**CASH REWARD**

**40,000/-**

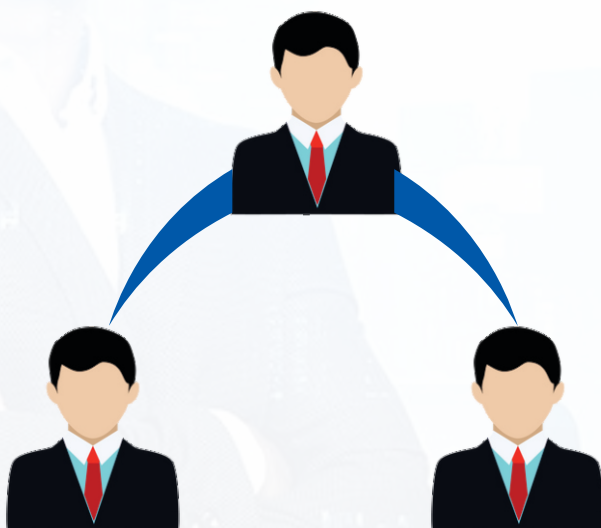
**Manali Tour**



**MANBICARE**

# BUSSINESS PLAN

## STAR BONUS



**17,05,000 BV**

**17,05,000 BV**

**ACCUMULATED BUSSINESS**



**STAR - 5**

**CASH REWARD**

**75,000/-**

**Goa Tour**

**Goa**

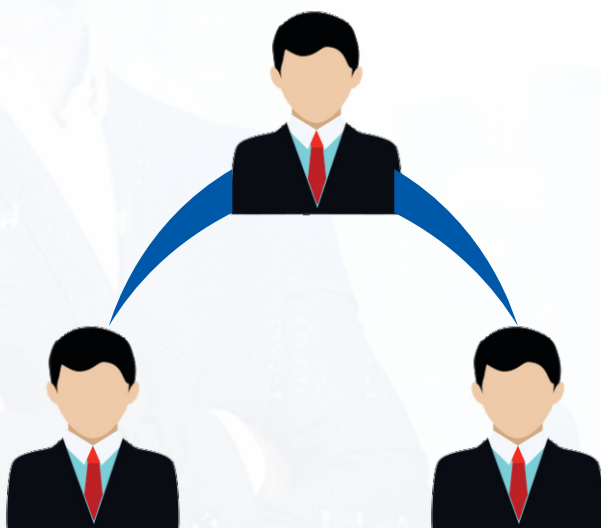


**Goa**

**MANBICARE**

# BUSSINESS PLAN

## STAR BONUS



**42,05,000 BV**

**42,05,000 BV**

**ACCUMULATED BUSSINESS**



**STAR - 6**

**CASH REWARD**

**2,00,000/-**

**Thailand Tour**

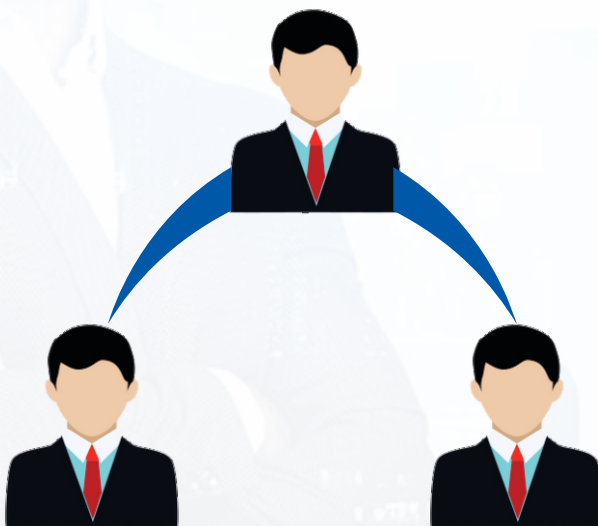




**MANBICARE**

# BUSSINESS PLAN

## STAR BONUS



**1,02,05,000 BV**

**1,02,05,000 BV**

**ACCUMULATED BUSSINESS**

**CASH REWARD**

**4,00,000/-**

**Dubai Tour**



**STAR - 7**

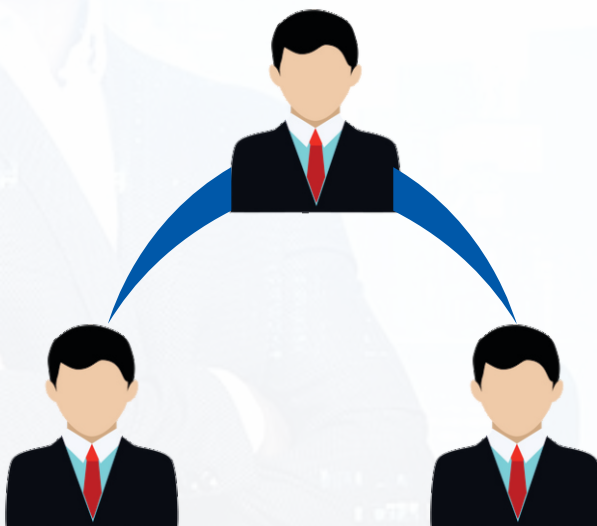




**MANBICARE**

# BUSSINESS PLAN

## STAR BONUS



**2,52,05,000 BV**

**2,52,05,000 BV**

**ACCUMULATED BUSSINESS**



**STAR - 8**

**CASH REWARD**

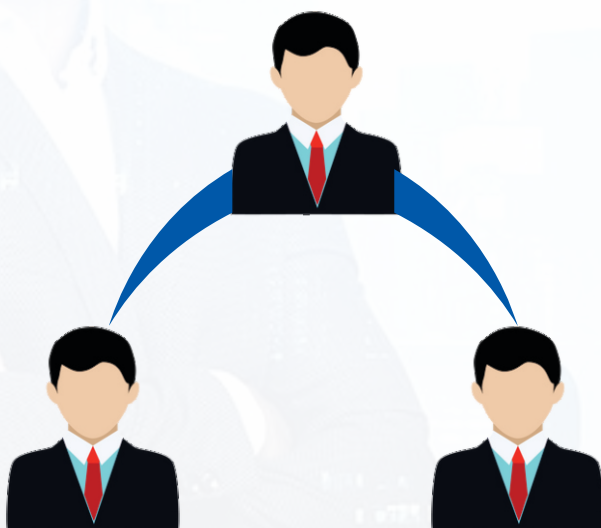
**10,00,000/-**



**MANBICARE**

# BUSSINESS PLAN

## STAR BONUS



**5,52,05,000 BV**

**5,52,05,000 BV**

**ACCUMULATED BUSSINESS**



**STAR - 9**

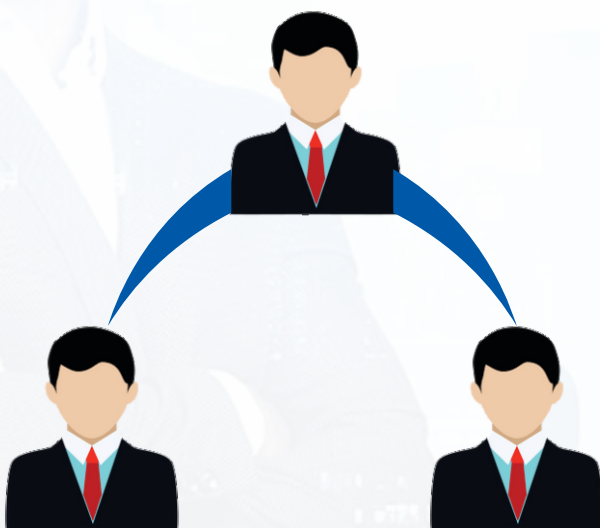
**CASH REWARD**  
**20,00,000/-**



**MANBICARE**

# BUSSINESS PLAN

## STAR BONUS



14,52,05,000 BV    14,52,05,000 BV

ACCUMULATED BUSSINESS

**CASH REWARD**

**50,00,000/-**

2% Royalty



**MANBICARE**

# BUSSINESS PLAN

## NOMINEE FUND



Purchase only 500 BV every month our distributor if expired between The age of 18th years to 60th years due to any cause, 2 % of BV turn over of that particular month will be Distributed all IBD nominees and the distributor code will be Transferred to the name of the nominee.



**MANBICARE**

# BUSSINESS PLAN

## TIME TO TIME BONANZA





**MANBICARE**



**THANK YOU FOR  
WATCHING**

**MANBICARE**

Near Rp Farm House, Ganga Nagar Gajraula, Distt. Amroha, U. P 244235

Tel. : 05924-796015 | website : [www.manbicare.com](http://www.manbicare.com)